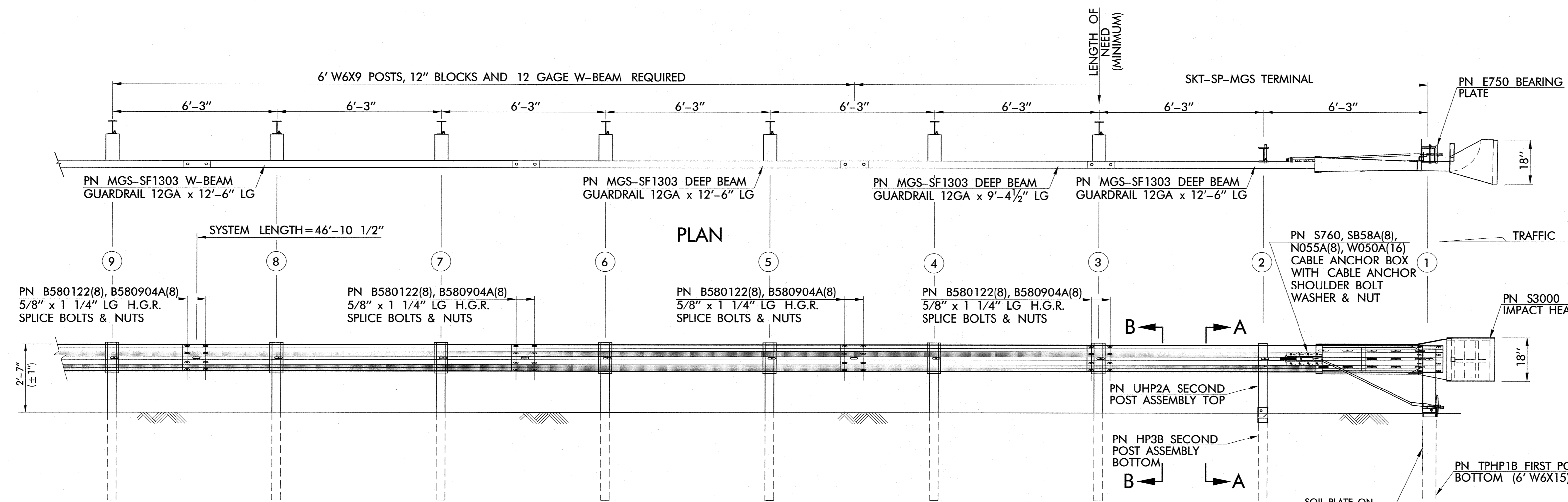
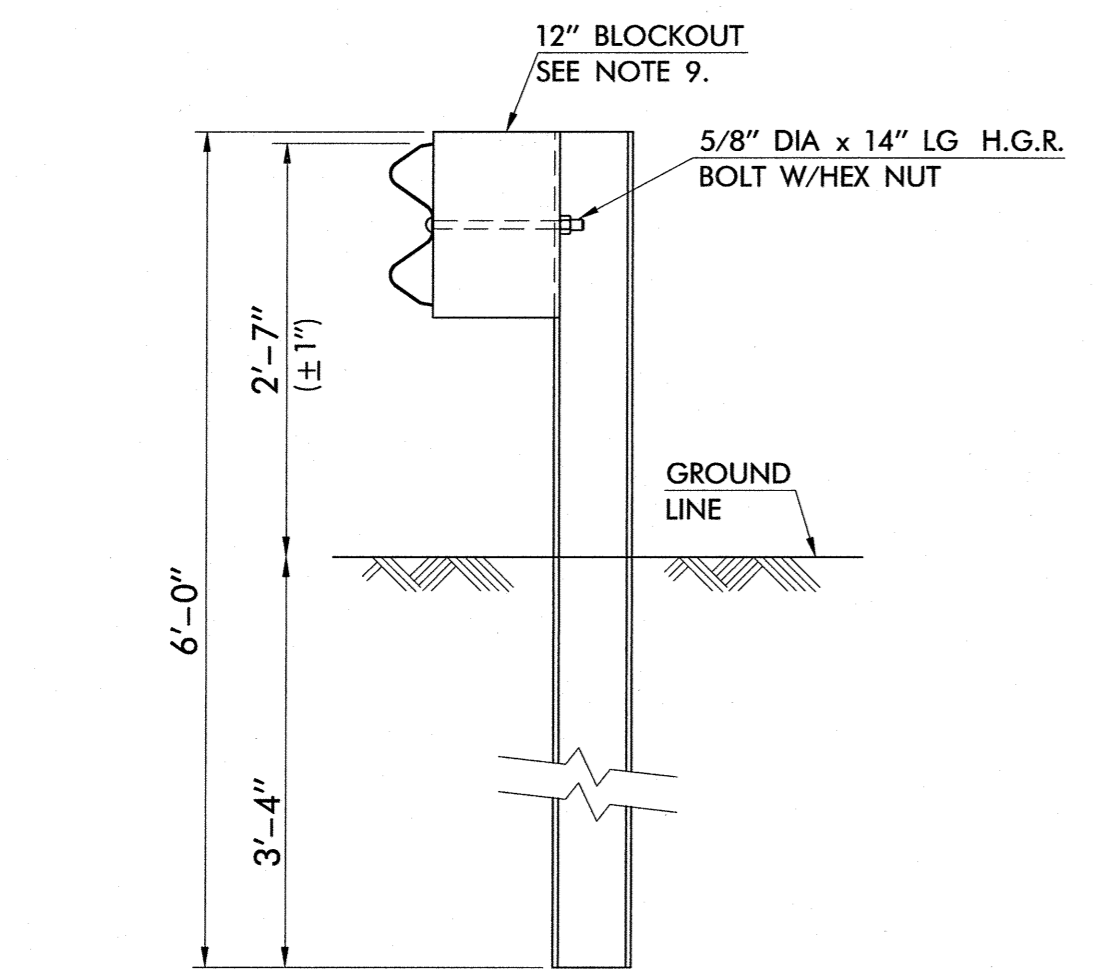


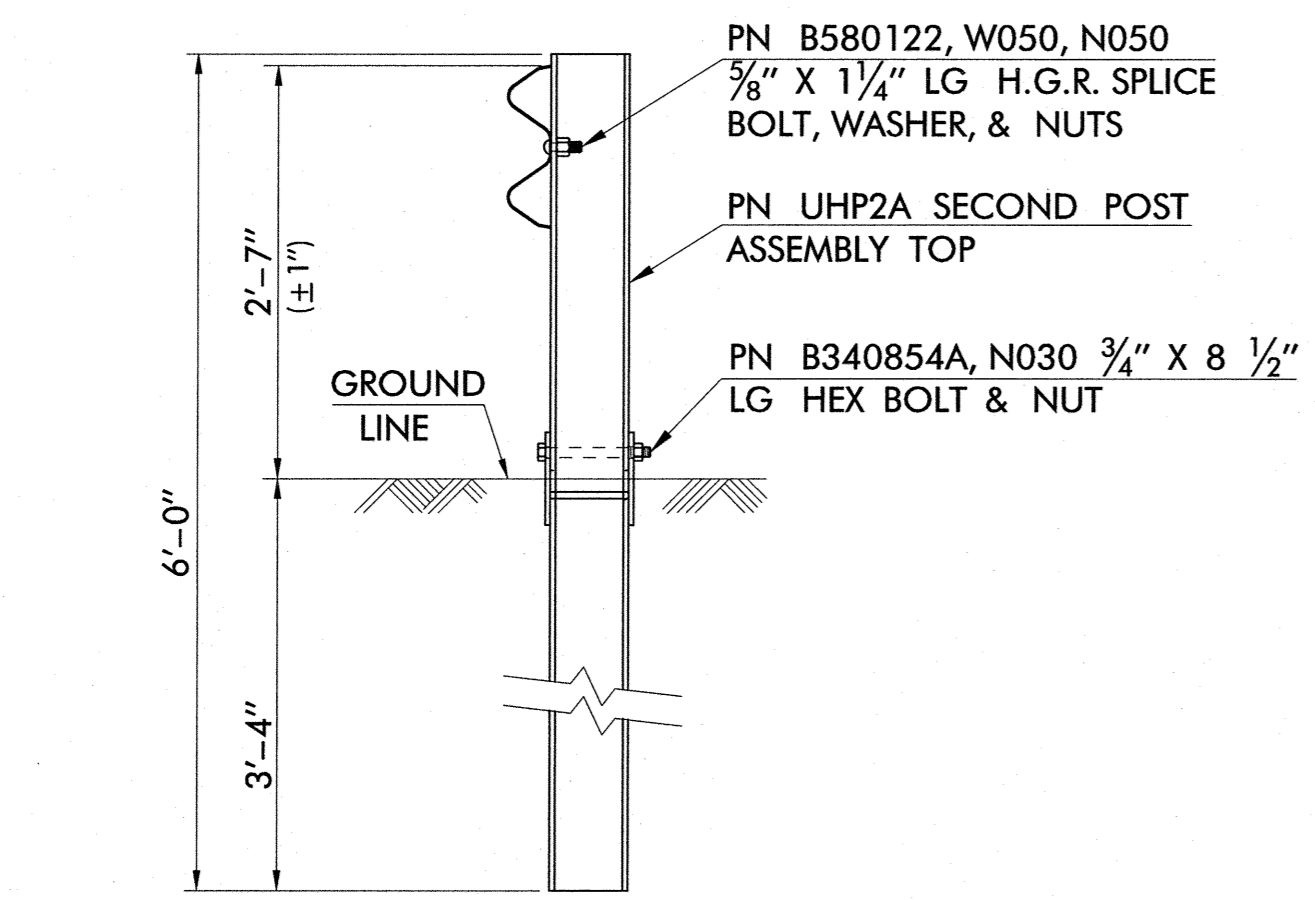
DESCRIPTION	REVISIONS	DATE



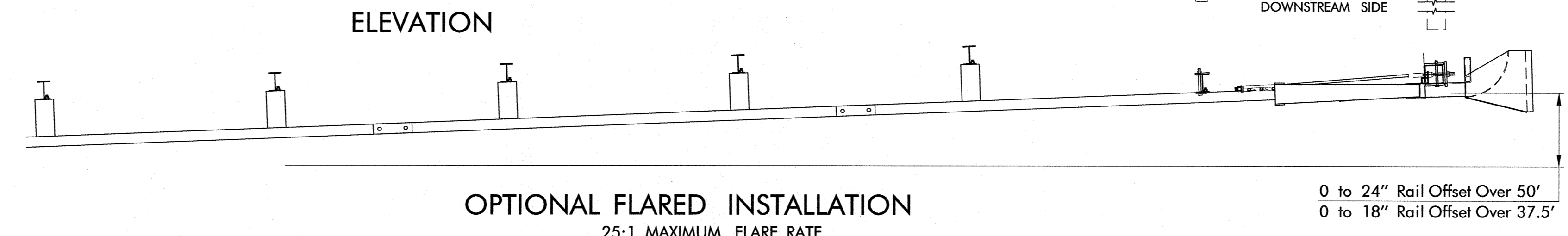
PN	QTY	DESCRIPTION
S3000	1	IMPACT HEAD
MGS-SF1303	1	W-BEAM GUARDRAIL END SECTION, 12 Ga.
TPHP1A	1	FIRST POST TOP (6X6X1/8" Tube)
TPHP1B	1	FIRST POST BOTTOM (6' W6X15)
UHP2A	1	SECOND POST ASSEMBLY TOP
HP3B	1	SECOND POST ASSEMBLY BOTTOM
E750	1	BEARING PLATE
S760	1	CABLE ANCHOR BOX
E770	1	BCT CABLE ANCHOR ASSEMBLY
B5160104A	2	5/16 x 1 HEX BOLT GRD 5
W0516	4	5/16 WASHER
N0516	2	5/16 HEX NUT
B580122	25	5/8 Dia. x 1 1/4 SPLICE BOLT (POST #2)
B580904A	2	5/8 Dia. x 9 HEX BOLT GRD 5
W050	3	5/8 WASHER
N050	26	5/8 Dia. H.G.R NUT
B340854A	1	3/4 Dia. x 8 1/2 HEX BOLT GRD A449
N030	1	3/4 Dia. HEX NUT
N100	1	1 ANCHOR CABLE HEX NUT
W100	1	1 ANCHOR CABLE WASHER
SB58A	8	CABLE ANCHOR BOX SHOULDER BOLT
N055A	8	1/2 A325 STRUCTURAL NUT
W050A	16	1 1/16 OD x 9/16 ID A325 STR. WASHER



SECTION B-B
TYP AT POSTS #3 THRU #8

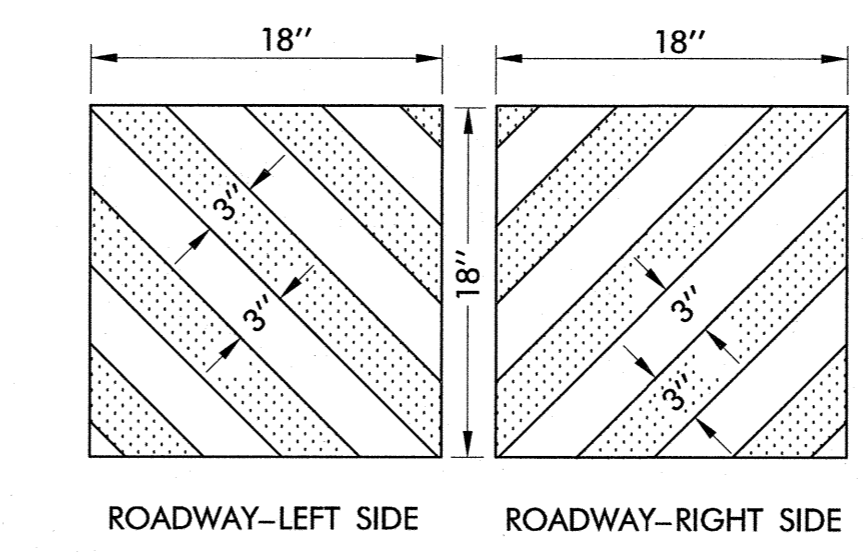


SECTION A-A
POST #2



IMPACT HEAD CONNECTION DETAIL

POST #1 CONNECTION DETAIL



REFLECTIVE MARKER DETAIL

REFLECTIVE MARKER

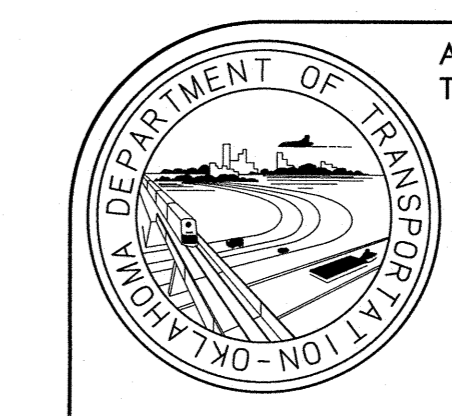
- REFLECTORIZED MARKER(S) SHOULD BE ATTACHED TO THE VERTICAL END (12" x 24" FACE - TYP.) OF THE G.E.T PRIOR TO INSTALLATION.
- ATTACHMENT SURFACE SHOULD BE THOROUGHLY CLEANED & DRY BEFORE ATTACHING ADHESIVE MARKER (STICK-ON SHEETING).
- ATTACHED ADHESIVE SHEETING SHOULD BE FREE OF AIR BUBBLES WITH ALL EDGES FIRMLY BONDED.
- STRIPING PATTERN MAY CONSIST OF 3" OR 4" STRIPES.

GENERAL NOTES

- ALL CONSTRUCTION AND MATERIAL REQUIREMENTS SHALL BE IN ACCORDANCE WITH THE 2009 ODOT STANDARD SPECIFICATIONS.
- ALL BOLTS, NUTS, CABLE ASSEMBLIES, CABLE ANCHORS AND BEARING PLATES SHALL BE GALVANIZED.
- THE LOWER SECTIONS OF THE POSTS 1 & 2 SHALL NOT PROTRUDE MORE THAN 4 IN ABOVE THE GROUND (MEASURED ALONG A 5' CORD). SITE GRADING MAY BE NECESSARY TO MEET THIS REQUIREMENT.
- THE LOWER SECTIONS OF THE HINGED POSTS SHOULD NOT BE DRIVEN WITH THE UPPER POST ATTACHED. IF THE POST IS PLACED IN A DRILLED HOLE, THE BACKFILL MATERIAL MUST BE SATISFACTORILY COMPACTED TO PREVENT SETTLEMENT.
- WHEN COMPETENT ROCK IS ENCOUNTERED, A 12" DIA POST HOLE, 20 IN. DEEP CORED INTO THE ROCK SURFACE MAY BE USED IF APPROVED BY THE ENGINEER FOR POST 1. GRANULAR MATERIAL WILL BE PLACED IN THE BOTTOM OF THE HOLE, APPROXIMATELY 2.5" DEEP TO PROVIDE DRAINAGE. THE FIRST POST CAN BE FIELD CUT TO LENGTH, PLACED IN THE HOLE AND BACKFILLED WITH SUITABLE BACKFILL. THE SOIL PLATE MAY BE TRIMMED IF REQUIRED.
- A SITE EVALUATION SHOULD BE CONSIDERED IF THERE IS LESS THAN 25' BETWEEN THE OUTLET SIDE OF THE TERMINAL AND ANY ADJACENT DRIVING LANE.
- THE BREAKAWAY CABLE ASSEMBLY MUST BE TAUT. A LOCKING DEVICE (VICE GRIPS OR CHANNEL LOCK PLIERS) SHOULD BE USED TO PREVENT THE CABLE FROM TWISTING WHEN TIGHTENING NUTS.
- EXTRUDER TYPE TERMINALS SHALL NOT BE INSTALLED WHEN ADJACENT DRIVING LANES ARE WITHIN 25 FEET (HORIZONT.) OF EXTRUSION SIDE OF THE EXTRUDER TERMINAL.
- RECYCLED COMPOSITE (PLASTIC) OR WOOD BLOCKOUTS MAY BE USED THROUGHOUT THE LENGTH OF THE TERMINAL, IF APPROVED BY THE ENGINEER.

BASIS OF PAYMENT

ITEM NO.	ITEM	UNIT
623(G)	GUARDRAIL END TREATMENT (31")	EA.



APPROVED BY
TRAFFIC ENGINEER: *David Smay* DATE: 4/9/12
TRAFFIC STANDARD

GUARDRAIL END TREATMENT
(SKT-SP-MGS EXTRUDER TERMINAL)
(31" SYSTEM)